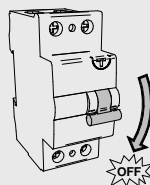
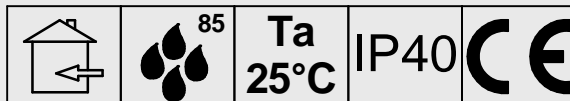


ISTRUZIONI DI MONTAGGIO PROFILO T - APPLIQUE



In caso di manutenzione togliere tensione.

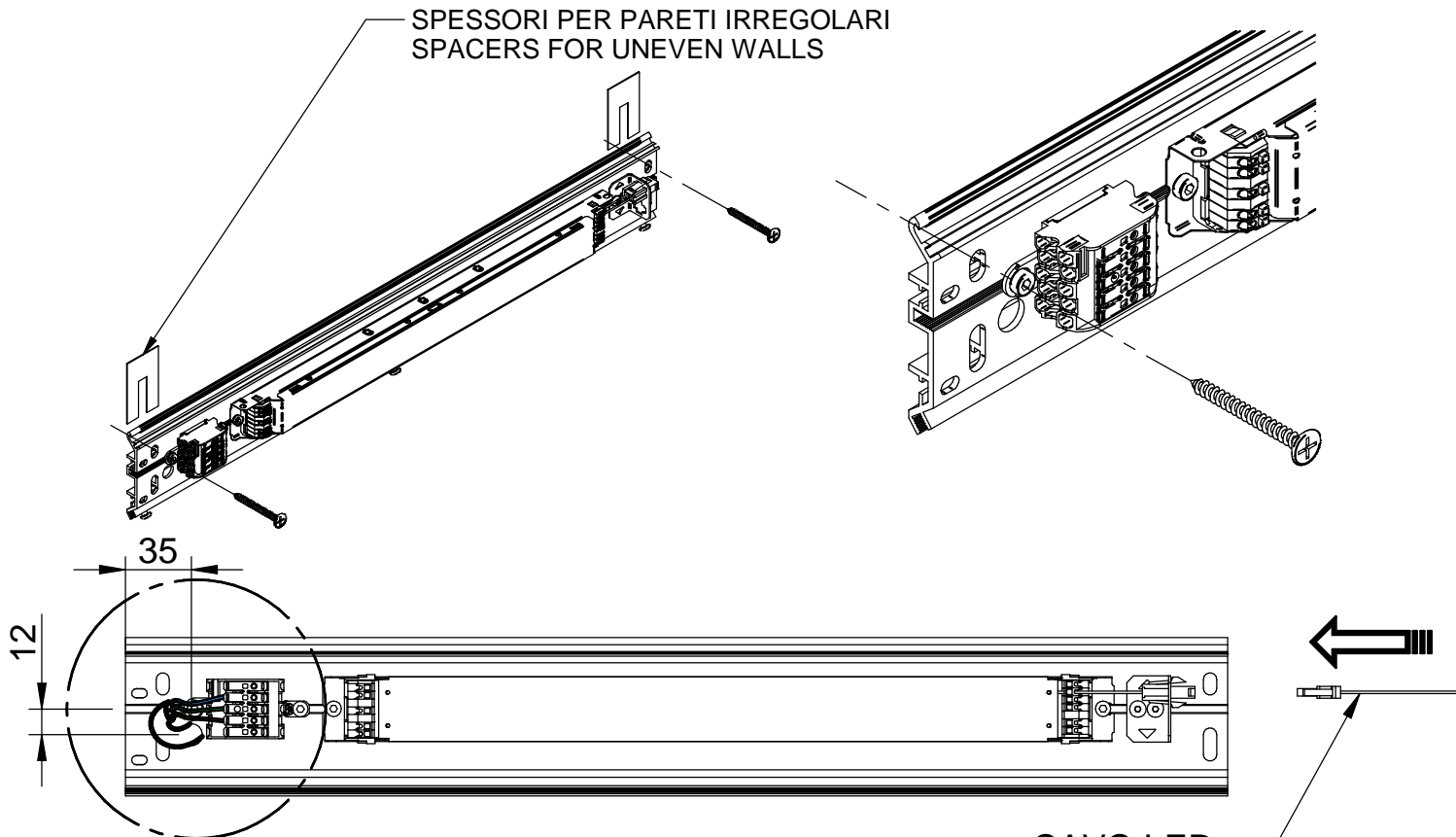
Always switch-off the power supply before carrying out any maintenance.

Si consiglia di effettuare l'installazione a cura di personale qualificato.
The installation should be done by qualified personnel.

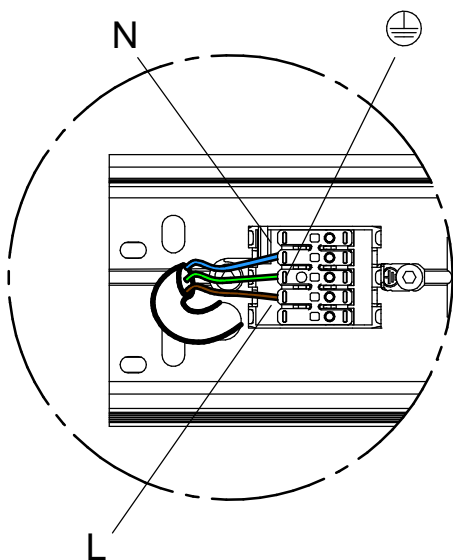
Alimentazione 220-240V 50/60 Hz

Power supply 220-240V 50/60 Hz

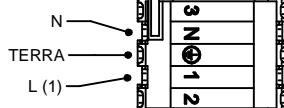
SPESSORI PER PARETI IRREGOLARI
SPACERS FOR UNEVEN WALLS



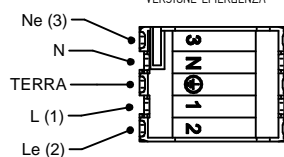
CAVO LED
LED CABLE



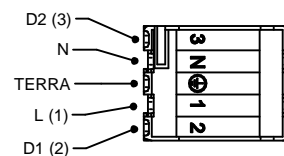
VERSIONE STANDARD (ON/OFF)



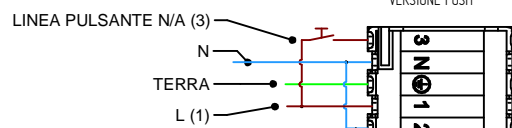
VERSIONE EMERGENZA



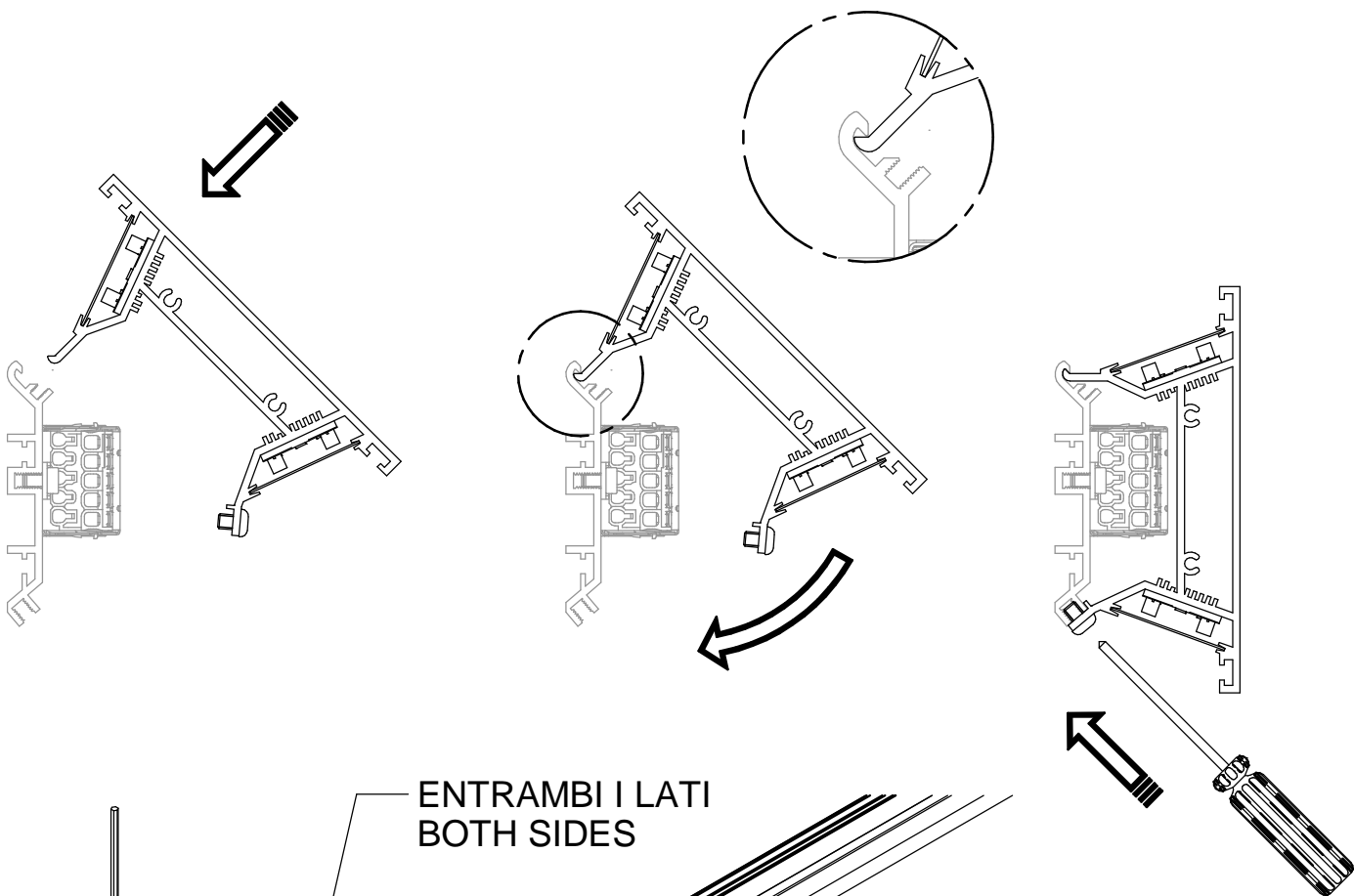
VERSIONE DALI



VERSIONE PUSH



PONTICELLO DEL NEUTRO
SUL MORSETTO (2)
DA REALIZZARE A CURA DELL'INSTALLATORE



ENTRAMBI I LATI
BOTH SIDES

