

COLLEZIONE OPTIX | OPTIX COLLECTION



OPTIX IN
418



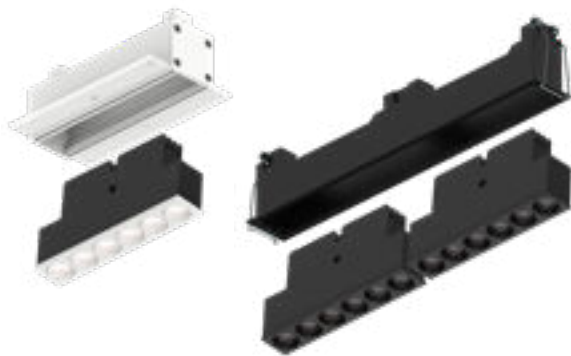
OPTIX PL
358



OPTIX TR
512

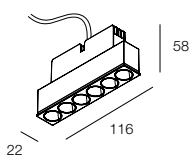
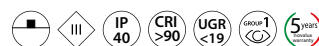


OPTIX IN



Apparecchi lineari con micro ottiche per installazione ad incasso in controsoffitto. Modulo LED con micro ottiche in pressofusione di alluminio verniciato a polvere, ad inserimento meccanico rapido a scatto all'interno dell'apposita cassaforma. Cassaforma con molle in acciaio armonico e corpo in pressofusione di alluminio verniciato a polvere. Cassaforma senza cornice, da stuccare e rasare, in estruso di alluminio verniciato a polvere. Alimentazione elettronica 220-240V 50/60Hz on-off o dimmerabile da ordinare a parte.

Linear luminaires with micro-optics for recessed installation in false ceilings. LED module with powder-coated die-cast aluminum micro-optics, designed for quick snap-in mechanical installation within the dedicated housing. Housing with harmonic steel springs and powder-coated die-cast aluminum body. Trimless housing, to be plastered and finished flush, made of powder-coated extruded aluminum. Electronic driver 220-240V 50/60Hz, on-off or dimmable, to be ordered separately.



MODULO LED MICRO OTTICHE

200mA. Provisto di connettore rapido. Cassaforma da ordinare a parte.

MICRO-OPTICS LED MODULE

200mA. Equipped with a quick connector. Housing to be ordered separately.

3000K

(white - black)



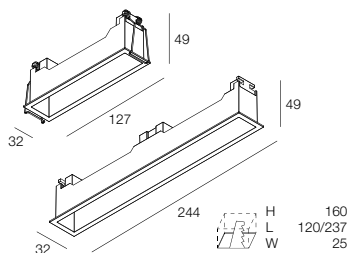
8W 40° 687 - 622 lm **113801.01 .02**

4000K

(white - black)



8W 40° 733 - 681 lm **113802.01 .02**



CASSAFORMA FRAME

Con molle. Idoneo per controsoffitto di spessore da 5 a 15mm.

FRAME HOUSING

With springs. Suitable for false ceilings with a thickness of 5 to 15 mm.

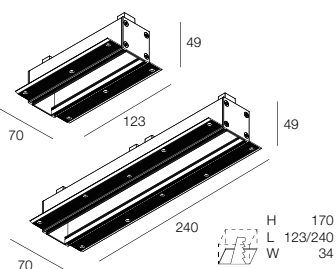
L (mm)

n. LED modules



127 1 **113803.01 .02**

244 2 **113804.01 .02**



CASSAFORMA FRAMELESS

Da stuccare e rasare.

FRAMELESS HOUSING

To be plastered and smoothed.

L (mm)

n. LED modules

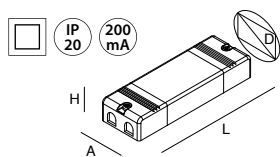


123 1 **113805.01 .02**

240 2 **113806.01 .02**

OPTIX IN

ACCESSORI ACCESSORIES

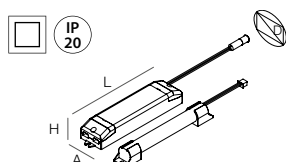


ALIMENTATORE ELETTRONICO STABILIZZATO
220-240V 50/60Hz
Provisto di connettore rapido.

ELECTRONIC STABILIZED DRIVER
220-240V 50/60Hz
Equipped with a quick connector.

	VERSION	A (mm)	D (mm)	H (mm)	L (mm)
101345.99	ON/OFF	8W	21	25	17 84
101346.99	DALI/PUSH	8W	30	36	21 142 39,50

Max 20 alimentatori gestibili in PUSH con uno o più pulsanti NA in parallelo.
Max 20 drivers manageable in PUSH mode with one or more NO buttons connected in parallel.



KIT DI EMERGENZA
da installare sul controsoffitto a lato del prodotto.

EMERGENCY KIT
to place on the false ceiling next to the fixture.

	TIME	CHARGE	A (mm)	D (mm)	H (mm)	L (mm)
18004.99	1h	12h	38	44	25	164
18005.99	3h	12h	38	44	25	164

Flusso in emergenza
Emergency flux

1h 3h
OPTIX IN 8W 56% 22%