



WELL / WELL GU10 MINI WELL

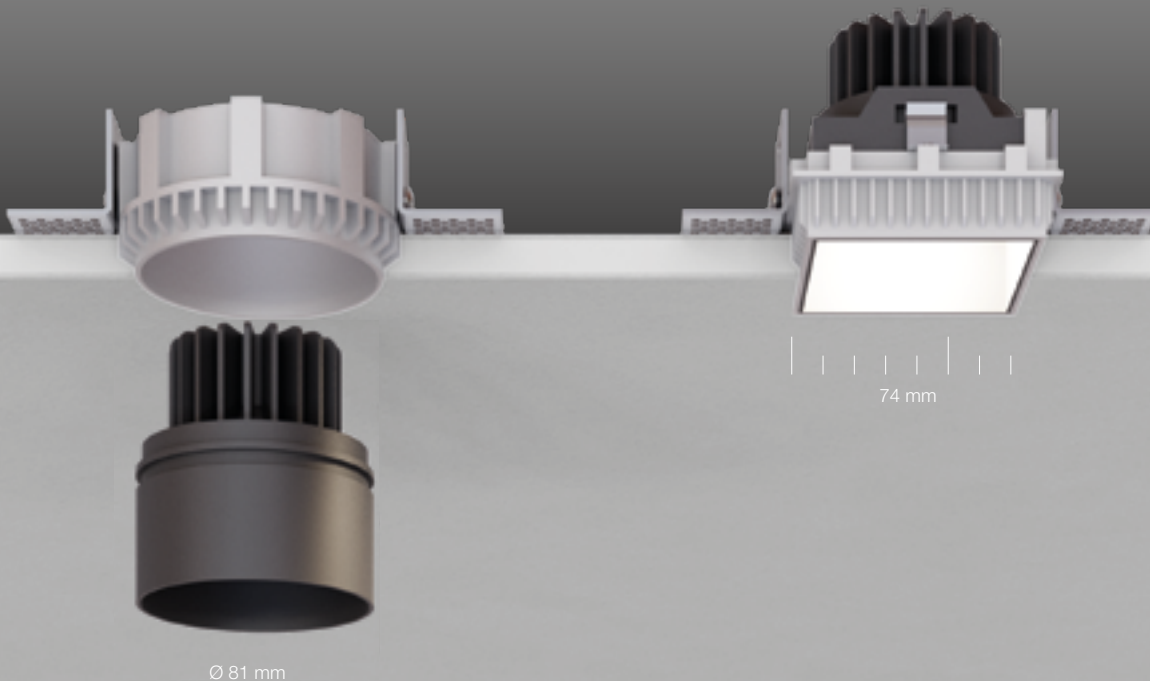
Downlight dal design essenziale che si incassa elegantemente nel soffitto, senza bordo e con sorgente luminosa CRI>90 leggermente arretrata. MINI WELL si affianca alla Famiglia WELL: un punto luce, ancora più piccolo e minimale, che scompare nell'architettura. Soluzione gradevole e armoniosa per arredare con la luce.

Downlight with an essential design that can be recessed elegantly into the ceiling, edgeless and with a CRI>90 light source slightly recessed. MINI WELL joins the WELL family: an even smaller and more minimalist light point, concealed in the architecture. A pleasant and harmonious solution to decorate using light.

WELL

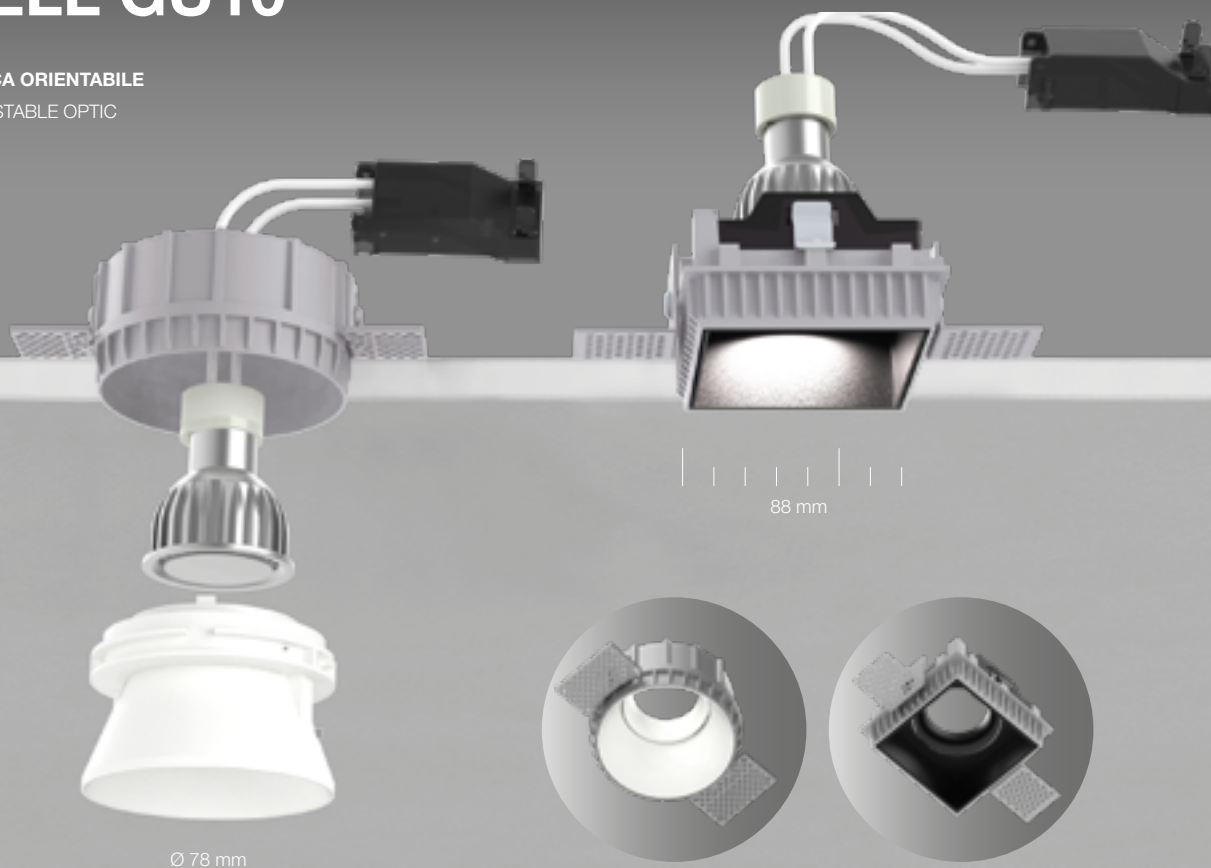
- **DOWNLIGHT DA INCASSO SU CARTONGESSO SENZA CORNICE**
FRAMELESS DOWNLIGHT FOR PLASTERBOARD RECESSED MOUNTING
- **CRI>90**
- **IP54**

- **VERSIONE TONDA UGR<19**
ROUND VERSION UGR<19
- **CONTROTELAIO IN ALLUMINIO PRESSOFUSO**
DIE-CAST ALUMINIUM HOUSING



WELL GU10

- **OTTICA ORIENTABILE**
ADJUSTABLE OPTIC



MINI WELL

- **VERSIONE NERA UGR<19**

BLACK VERSION UGR<19

- **CORPO TONDO E CONTROTELAIO IN ALLUMINIO PRESSOFUSO VERNICIATO**

ROUND BODY AND SUBFRAME IN PAINTED DIE-CAST ALUMINIUM

- **CORPO QUADRATO E CONTROTELAIO IN ACCIAIO VERNICIATO**

SQUARE BODY AND SUBFRAME IN PAINTED STEEL

- **CRI>90**

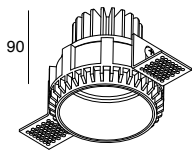
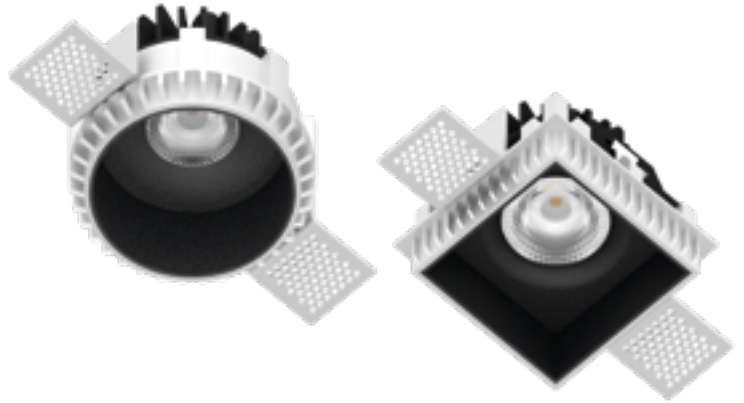


WELL



Downlight LED per incasso da rasare, installabile su cartongesso di spessore 5-15 mm. Corpo tondo in pressofusione di alluminio verniciato, corpo quadrato in acciaio verniciato. Dissipatore e controtelaio in pressofusione di alluminio anodizzato. Alimentatore elettronico 500mA da ordinare a parte.

Frameless LED downlight, to be installed on 5-15 mm thickness plasterboard. Round body in painted die cast aluminium, square body in painted steel. Dissipater and housing in die cast anodized aluminium. Electronic driver 500mA to be ordered separately.



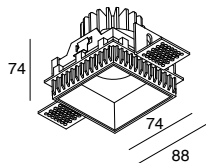
WELL TONDO
500mA

WELL ROUND
500mA

UGR
<19

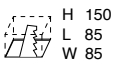


		(white - black)	3000K	(white - black)	4000K
10W	36°	791-745 lm	101901.01 .02	846-797 lm	101902.01 .02
10W	55°	745-645 lm	101909.01 .02	797-690 lm	101910.01 .02



WELL QUADRATO
500mA

WELL SQUARE
500mA



		(white - black)	3000K	(white - black)	4000K
10W	36°	831-783 lm	101905.01 .02	889-838 lm	101906.01 .02
10W	55°	779-682 lm	101911.01 .02	833-730 lm	101912.01 .02

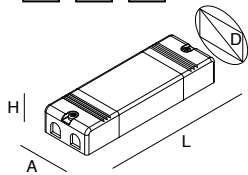
WELL

ACCESSORI ACCESSORIES



ALIMENTATORE ELETTRONICO
STABILIZZATO 500mA
220-240V 50/60Hz

ELECTRONIC STABILIZED
DRIVER 500mA
220-240V 50/60Hz



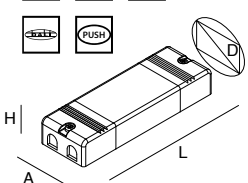
	N° WELL	A (mm)	D (mm)	H (mm)	L (mm)	
101331.99	14W	1 max	22	32	19	158
101325.99	18W	1 max	45	49	21	115

Collegamento in serie di piu farette secondo tabella.
Series connection of several downlights according to table.



ALIMENTATORE ELETTRONICO
DIMMERABILE STABILIZZATO 500mA
220-240V 50/60Hz

ELECTRONIC DIMMABLE
STABILIZED DRIVER 500mA
220-240V 50/60Hz



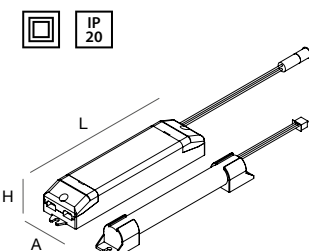
	N° WELL	A (mm)	D (mm)	H (mm)	L (mm)	
101334.99	26W	2 max	43	52	30	131

Collegamento in serie di piu farette secondo tabella.
Max 20 alimentatori gestibili in PUSH con uno o più pulsanti N/A in parallelo.
Series connection of several downlights according to table.
Max 20 drivers manageable in PUSH with one or more NO buttons in parallel.



KIT DI EMERGENZA
da installare sul controsoffitto
a lato del prodotto.

EMERGENCY KIT
to place on the false ceiling
next to the fixture.



	TIME	CHARGE	A (mm)	D (mm)	H (mm)	L (mm)
18004.99	1h	12h	38	44	25	164
18005.99	3h	12h	38	44	25	164

Flusso in emergenza
Emergency flux

WELL 10W **44%** **18%**

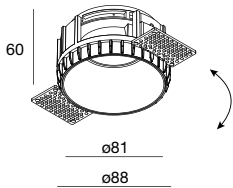
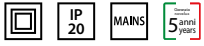
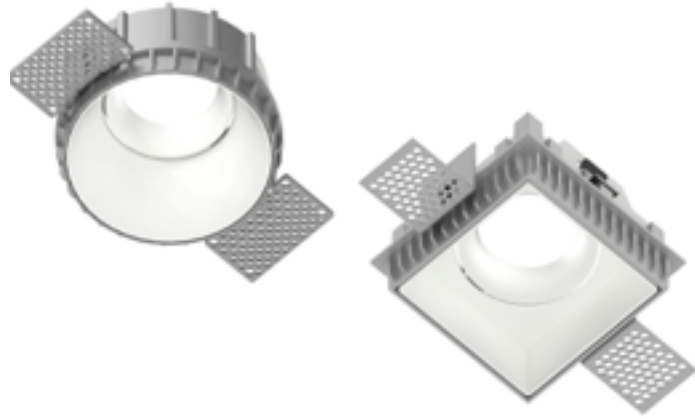
NEW

WELL GU10



Downlight orientabile LED GU10 per incasso da rasare, installabile su cartongesso di spessore 5-15 mm. Corpo tondo in pressofusione di alluminio verniciato, corpo quadrato in acciaio verniciato. Sorgente LED GU10 (non fornita).

Adjustable LED GU10 downlight for trimless recessed installation, suitable for plasterboard with a thickness of 5-15 mm. Round body in painted die-cast aluminum, square body in painted steel. LED GU10 light source (not included).



WELL GU10 TONDO

1x GU10 max 10W non fornita

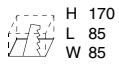
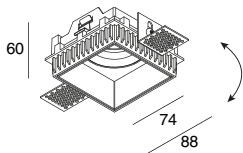
WELL GU10 ROUND

1x GU10 max 10W not provided



101913. __ 01 02

GU10 max 10W



WELL GU10 QUADRATO

1x GU10 max 10W non fornita

WELL GU10 SQUARE

1x GU10 LED max 10W not provided



101914. __ 01 02

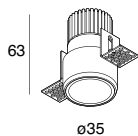
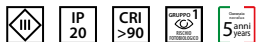
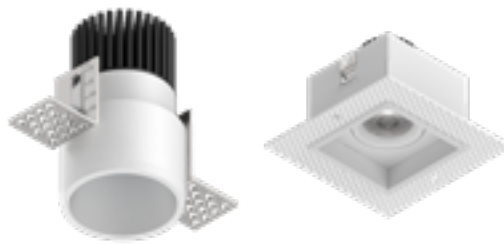
GU10 max 10W

MINI WELL



Downlight LED per incasso da rasare, installabile su cartongesso di spessore 5-15 mm. Corpo tondo e controtelaio in pressofusione di alluminio verniciato. Corpo quadrato e controtelaio in acciaio verniciato. Dissipatore in lega di alluminio anodizzato. Alimentatore elettronico 500mA da ordinare a parte.

Frameless LED downlight, to be installed on 5-15 mm thickness plasterboard. Round body and subframe in painted die-cast aluminium. Square body and subframe in painted steel. Heat sink in anodized aluminum alloy. Electronic driver 500mA to be ordered separately.



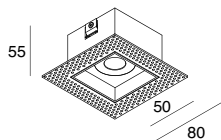
MINI WELL TONDO

MINI WELL ROUND

UGR <19 *



		(white - black)	3000K	*
5W	36°	326 - 273 lm	<input type="checkbox"/>	<input checked="" type="checkbox"/>
			101908.01	.02



MINI WELL QUADRATO

MINI WELL SQUARE

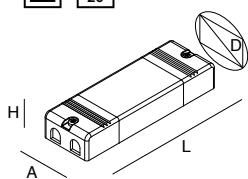
UGR <19 *



		(white - black)	3000K	*
5W	36°	381 - 365 lm	<input type="checkbox"/>	<input checked="" type="checkbox"/>
			101907.01	.02

MINI WELL

ACCESSORI ACCESSORIES



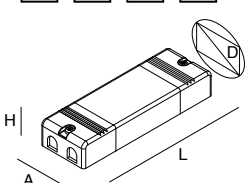
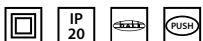
ALIMENTATORE ELETTRONICO
STABILIZZATO 500mA
220-240V 50/60Hz

ELECTRONIC STABILIZED
DRIVER 500mA
220-240V 50/60Hz

		N° MINI WELL	A (mm)	D (mm)	H (mm)	L (mm)
101343.99	6W	1 max	27	34	21	53
101331.99	14W	2 max	22	32	19	158
101325.99	18W	3 max*	45	49	21	115

* Alimentatore non passante per il foro, da prevedere remoto
Collegamento in serie di più faretti secondo tabella.

* Driver not passing through the hole, to be provided remote
Series connection of several downlights according to table.



ALIMENTATORE ELETTRONICO
DIMMERABILE STABILIZZATO 500mA
220-240V 50/60Hz

ELECTRONIC DIMMABLE
STABILIZED DRIVER 500mA
220-240V 50/60Hz

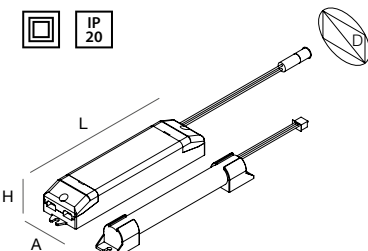
		N° MINI WELL	A (mm)	D (mm)	H (mm)	L (mm)
101334.99	26W	5 max*	43	52	30	131

* Collegamento in serie di più faretti secondo tabella.

Max 20 alimentatori gestibili in PUSH con uno o più pulsanti N/A in parallelo.

* Series connection of several downlights according to table.

Max 20 drivers manageable in PUSH with one or more NO buttons in parallel.



KIT DI EMERGENZA
da installare sul controsoffitto
a lato del prodotto.

EMERGENCY KIT
to place on the false ceiling
next to the fixture.

		TIME	CHARGE	A (mm)	D (mm)	H (mm)	L (mm)
18004.99		1h	12h	38	44	25	164
18005.99		3h	12h	38	44	25	164

Flusso in emergenza
Emergency flux

MINI WELL 5W **78%** **32%**

