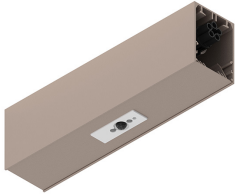


# HERO PLUS B

114791.21

**novalux**  
ITALIAN LIGHTING DESIGN SINCE 1948



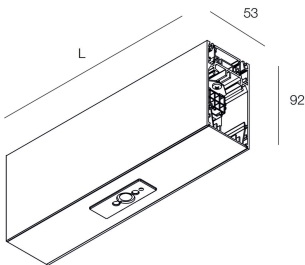
## Features

Use: Indoor  
Type of installation: SUSPENDED  
Colour: CAPPUCCINO  
Dimming: DALI2  
L: 280mm  
A: 53mm  
H: 92mm  
Made in: ITALY  
Warranty: 5 years  
Weight: 0.85kg

## Tech data

IP: 40  
Insulation class: I  
SELV: No

[HERO PLUS B: View more product info](#)



Novalux S.r.l. via Marzabotto, 2 40050 Funo di Argelato (BO) Italy  
Tel: +39 051 860558 · Fax +39 051 6647859 · Mail: info@novalux.it · VAT number 00536541204 · novalux.com  
Company subject to the management and coordination by SLV GmbH

This technical data sheet is owned by Novalux S.r.l., all rights reserved. Novalux S.r.l. reserves the right to make changes without prior notice.  
Last update: 29/5/2026, 16:26:27

# HERO PLUS B

114791.21

**novalux**  
ITALIAN LIGHTING DESIGN SINCE 1948

## COMPLETION ACCESSORIES

	HERO+: KIT DI GIUNZIONE PROFILI 1PZ	<b>108940.99</b>
	HERO B: COPPIA TESTATE CAP	<b>1087B1.21</b>
	HERO+B: MOD.CIECO 280 CAP	<b>114785.21</b>
	HERO+B: MOD.CIECO 1120 CAP	<b>114786.21</b>
	HERO+B: MOD.CIECO 1400 CAP	<b>114787.21</b>
	HERO+B: MOD.CIECO 1680 CAP	<b>114788.21</b>
	HERO+B: MOD.CIECO ANG. SX DX 150 CAP	<b>114789.21</b>

## MOUNTING ACCESSORIES

	KIT SOSPENSIONE HERO+B/MINI B L.1.2M 2PZ	<b>114794.99</b>
	KIT SOSPENSIONE HERO+B/MINI B L. 3M 2PZ	<b>114795.99</b>
	KIT SOSPENSIONE HERO+B/MINI B L.1.2M 3PZ	<b>114796.99</b>



Novalux S.r.l. via Marzabotto, 2 40050 Funo di Argelato (BO) Italy  
Tel: +39 051 860558 · Fax +39 051 6647859 · Mail: info@novalux.it · VAT number 00536541204 · novalux.com  
Company subject to the management and coordination by SLV GmbH

This technical data sheet is owned by Novalux S.r.l., all rights reserved. Novalux S.r.l. reserves the right to make changes without prior notice.  
Last update: 29/5/2026, 16:26:27

# HERO PLUS B

114791.21

**novalux**  
ITALIAN LIGHTING DESIGN SINCE 1948



KIT SOSPENSIONE HERO+B/MINI B L. 3M 3PZ

**114797.99**



KIT ALIMENTAZIONE L3000 3P CAP

**108920.21**



KIT ALIMENTAZIONE L3000 5P CAP

**108922.21**

## EMERGENCY ACCESSORIES



HERO+: KIT 2 CAVI 1X1.5 EMERGE. L.1400

**108941.99**



Novalux S.r.l. via Marzabotto, 2 40050 Funo di Argelato (BO) Italy  
Tel: +39 051 860558 · Fax +39 051 6647859 · Mail: info@novalux.it · VAT number 00536541204 · novalux.com  
Company subject to the management and coordination by SLV GmbH

This technical data sheet is owned by Novalux S.r.l., all rights reserved. Novalux S.r.l. reserves the right to make changes without prior notice.  
Last update: 29/5/2026, 16:26:27