

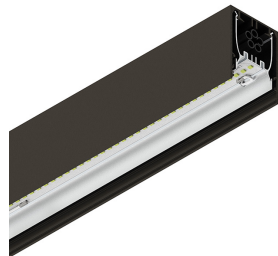
HERO PLUS B

114742.20 + 108937.99

HERO+B: 126W 4K 2800 DALI/PUSH CAF + HERO+: DIFF. OPALE ALTA TRASMITT PER 2800



novalux
ITALIAN LIGHTING DESIGN SINCE 1948



Features

Use: Indoor
Type of installation: SUSPENDED
Emission: DIRECT/INDIRECT
Optics: HIGH-TRANSMITTANCE OPAL DIFFUSER
Colour: CAFFE
Dimming: DALI2, PUSH
Emergency: NO
L: 2800mm
A: 53mm
H: 92mm
Made in: ITALY
Warranty: 5 years
Weight: 10kg

Tech data

Luminaire input power: 139W
Luminaire luminous flux: 8817lm
Indirect luminous flux: 7323lm
IP: 40
Insulation class: I
No. of driver per product: 2
Supply voltage: 220-240V 50/60Hz
SELV: Si

Source

Light source: LED
Source power: 126W
Source luminous flux: 11510lm
Colour temperature: 4000K
CRI: >90
Colour tolerance: 3 Step MacAdam
LED lifespan: 50000h L90 B10

Compliance

CEI EN 60598-1:2021 + A11:2023, CEI EN 60598-2-1:2022

Standards

Photobiological risk: RISK GROUP 0 Certified fixture in EXEMPT GROUP, in accordance with CEI EN 62471:2010-01, IEC TR 62778:2014.
CAM edilizia: CAM edilizia - Conforme al Decreto Ministeriale 23 giugno 2022 n.256 e 24 novembre 2025 n.256.

Average luminance

Average luminance limits for DSE workstation 65°(in accordance to EN 12464-1:2011).

[HERO PLUS B: View more product info](#)



Novalux S.r.l. via Marzabotto, 2 40050 Funo di Argelato (BO) Italy
Tel: +39 051 860558 · Fax +39 051 6647859 · Mail: info@novalux.it · VAT number 00536541204 · novalux.com
Company subject to the management and coordination by SLV GmbH

This technical data sheet is owned by Novalux S.r.l., all rights reserved. Novalux S.r.l. reserves the right to make changes without prior notice.
Last update: 29/5/2026, 17:10:03

HERO PLUS B

114742.20 + 108937.99

HERO+B: 126W 4K 2800 DALI/PUSH CAF + HERO+: DIFF. OPALE ALTA TRASMIT PER 2800

novalux
ITALIAN LIGHTING DESIGN SINCE 1948



Features

Use: Indoor
Optics: HIGH-TRANSMITTANCE OPAL DIFFUSER
L: 2800mm
A: 48mm
H: 6mm
Made in: ITALY
Warranty: 5 years
Weight: 0.6kg

Tech data

IP: 40
SELV: No

Average luminance

Average luminance limits for DSE workstation 65°(in accordance to EN 12464-1:2011).



Novalux S.r.l. via Marzabotto, 2 40050 Funo di Argelato (BO) Italy
Tel: +39 051 860558 · Fax +39 051 6647859 · Mail: info@novalux.it · VAT number 00536541204 · novalux.com
Company subject to the management and coordination by SLV GmbH

This technical data sheet is owned by Novalux S.r.l., all rights reserved. Novalux S.r.l. reserves the right to make changes without prior notice.
Last update: 29/5/2026, 17:10:03

HERO PLUS B

114742.20 + 108937.99

HERO+B: 126W 4K 2800 DALI/PUSH CAF + HERO+: DIFF. OPALE ALTA TRASMIT PER 2800

novalux
ITALIAN LIGHTING DESIGN SINCE 1948

COMPLETION ACCESSORIES

	HERO: TESTATA OPALE PER SCHERMO TL 2PZ	108930.99
	HERO+: KIT DI GIUNZIONE PROFILI 1PZ	108940.99
	HERO B: COPPIA TESTATE CAF	1087B1.20
	HERO+B: MOD.CIECO 280 CAF	114785.20
	HERO+B: MOD.CIECO 1120 CAF	114786.20
	HERO+B: MOD.CIECO 1400 CAF	114787.20
	HERO+B: MOD.CIECO 1680 CAF	114788.20
	HERO+B: MOD.CIECO ANG. SX DX 150 CAF	114789.20

MOUNTING ACCESSORIES

	KIT SOSPENSIONE HERO+B/MINI B L. 1.2M 2PZ	114794.99
	KIT SOSPENSIONE HERO+B/MINI B L. 3M 2PZ	114795.99



Novalux S.r.l. via Marzabotto, 2 40050 Funo di Argelato (BO) Italy
Tel: +39 051 860558 · Fax +39 051 6647859 · Mail: info@novalux.it · VAT number 00536541204 · novalux.com
Company subject to the management and coordination by SLV GmbH

This technical data sheet is owned by Novalux S.r.l., all rights reserved. Novalux S.r.l. reserves the right to make changes without prior notice.
Last update: 29/5/2026, 17:10:03

HERO PLUS B

114742.20 + 108937.99

novalux
ITALIAN LIGHTING DESIGN SINCE 1948

HERO+B: 126W 4K 2800 DALI/PUSH CAF + HERO+: DIFF. OPALE ALTA TRASMIT PER 2800



KIT SOSPENSIONE HERO+B/MINI B L.1.2M 3PZ

114796.99



KIT SOSPENSIONE HERO+B/MINI B L.3M 3PZ

114797.99



KIT ALIMENTAZIONE L3000 3P CAF

108920.20



KIT ALIMENTAZIONE L3000 5P CAF

108922.20

EMERGENCY ACCESSORIES



HERO+: KIT 2 CAVI 1X1.5 EMERGE. L.2800

108943.99



Novalux S.r.l. via Marzabotto, 2 40050 Funo di Argelato (BO) Italy
Tel: +39 051 860558 · Fax +39 051 6647859 · Mail: info@novalux.it · VAT number 00536541204 · novalux.com
Company subject to the management and coordination by SLV GmbH

This technical data sheet is owned by Novalux S.r.l., all rights reserved. Novalux S.r.l. reserves the right to make changes without prior notice.
Last update: 29/5/2026, 17:10:03