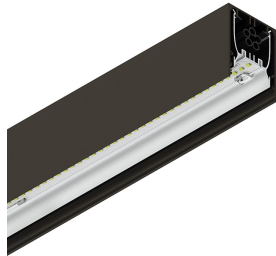


# HERO PLUS B

114704.20 + 108934.99

HERO+B: 86W 2.7K 1960 CAF + HERO+: DIFF. OPALE ALTA TRASMIT PER 1960

**novalux**  
ITALIAN LIGHTING DESIGN SINCE 1948



## Features

Use: Indoor  
Type of installation: SUSPENDED  
Emission: DIRECT/INDIRECT  
Optics: HIGH-TRANSMITTANCE OPAL DIFFUSER  
Colour: CAFFE  
Dimming: ON/OFF  
Emergency: NO  
L: 1960mm  
A: 53mm  
H: 92mm  
Made in: ITALY  
Warranty: 5 years  
Weight: 7kg

## Tech data

Luminaire input power: 95W  
Luminaire luminous flux: 5566lm  
Indirect luminous flux: 4402lm  
IP: 40  
Insulation class: I  
No. of driver per product: 2  
Supply voltage: 220-240V 50/60Hz  
SELV: Si

## Source

Light source: LED  
Source power: 86W  
Source luminous flux: 7266lm  
Colour temperature: 2700K  
CRI: >90  
Colour tolerance: 3 Step MacAdam  
LED lifespan: 50000h L90 B10

## Compliance

CEI EN 60598-1:2021 + A11:2023, CEI EN 60598-2-1:2022

## Standards

Photobiological risk: RISK GROUP 0 Certified fixture in EXEMPT GROUP, in accordance with CEI EN 62471:2010-01, IEC TR 62778:2014.  
CAM edilizia: CAM edilizia - Conforme al Decreto Ministeriale 23 giugno 2022 n.256 e 24 novembre 2025 n.256.

## Average luminance

Average luminance limits for DSE workstation 65°(in accordance to EN 12464-1:2011).

[HERO PLUS B: View more product info](#)



Novalux S.r.l. via Marzabotto, 2 40050 Funo di Argelato (BO) Italy  
Tel: +39 051 860558 · Fax +39 051 6647859 · Mail: info@novalux.it · VAT number 00536541204 · novalux.com  
Company subject to the management and coordination by SLV GmbH

This technical data sheet is owned by Novalux S.r.l., all rights reserved. Novalux S.r.l. reserves the right to make changes without prior notice.  
Last update: 29/5/2026, 17:06:05

# HERO PLUS B

114704.20 + 108934.99

HERO+B: 86W 2.7K 1960 CAF + HERO+: DIFF. OPALE ALTA TRASMIT PER 1960

**novalux**  
ITALIAN LIGHTING DESIGN SINCE 1948



## Features

Use: Indoor  
Optics: HIGH-TRANSMITTANCE OPAL DIFFUSER  
L: 1960mm  
A: 48mm  
H: 6mm  
Made in: ITALY  
Warranty: 5 years  
Weight: 0.4kg

## Tech data

IP: 40  
SELV: No

## Average luminance

Average luminance limits for DSE workstation 65°(in accordance to EN 12464-1:2011).



Novalux S.r.l. via Marzabotto, 2 40050 Funo di Argelato (BO) Italy  
Tel: +39 051 860558 · Fax +39 051 6647859 · Mail: info@novalux.it · VAT number 00536541204 · novalux.com  
Company subject to the management and coordination by SLV GmbH

This technical data sheet is owned by Novalux S.r.l., all rights reserved. Novalux S.r.l. reserves the right to make changes without prior notice.  
Last update: 29/5/2026, 17:06:05

# HERO PLUS B

114704.20 + 108934.99

HERO+B: 86W 2.7K 1960 CAF + HERO+: DIFF. OPALE ALTA TRASMIT PER 1960

**novalux**  
ITALIAN LIGHTING DESIGN SINCE 1948

## COMPLETION ACCESSORIES

	HERO: TESTATA OPALE PER SCHERMO TL 2PZ	<b>108930.99</b>
	HERO+: KIT DI GIUNZIONE PROFILI 1PZ	<b>108940.99</b>
	HERO B: COPPIA TESTATE CAF	<b>1087B1.20</b>
	HERO+B: MOD.CIECO 280 CAF	<b>114785.20</b>
	HERO+B: MOD.CIECO 1120 CAF	<b>114786.20</b>
	HERO+B: MOD.CIECO 1400 CAF	<b>114787.20</b>
	HERO+B: MOD.CIECO 1680 CAF	<b>114788.20</b>
	HERO+B: MOD.CIECO ANG. SX DX 150 CAF	<b>114789.20</b>

## MOUNTING ACCESSORIES

	KIT SOSPENSIONE HERO+B/MINI B L. 1.2M 2PZ	<b>114794.99</b>
	KIT SOSPENSIONE HERO+B/MINI B L. 3M 2PZ	<b>114795.99</b>



Novalux S.r.l. via Marzabotto, 2 40050 Funo di Argelato (BO) Italy  
Tel: +39 051 860558 · Fax +39 051 6647859 · Mail: info@novalux.it · VAT number 00536541204 · novalux.com  
Company subject to the management and coordination by SLV GmbH

This technical data sheet is owned by Novalux S.r.l., all rights reserved. Novalux S.r.l. reserves the right to make changes without prior notice.  
Last update: 29/5/2026, 17:06:05

# HERO PLUS B

114704.20 + 108934.99

HERO+B: 86W 2.7K 1960 CAF + HERO+: DIFF. OPALE ALTA TRASMIT PER 1960

**novalux**  
ITALIAN LIGHTING DESIGN SINCE 1948



KIT SOSPENSIONE HERO+B/MINI B L.1.2M 3PZ

**114796.99**



KIT SOSPENSIONE HERO+B/MINI B L. 3M 3PZ

**114797.99**



KIT ALIMENTAZIONE L3000 3P CAF

**108920.20**



KIT ALIMENTAZIONE L3000 5P CAF

**108922.20**

## EMERGENCY ACCESSORIES



HERO+: KIT 2 CAVI 1X1.5 EMERGE. L.1960

**108942.99**



Novalux S.r.l. via Marzabotto, 2 40050 Funo di Argelato (BO) Italy  
Tel: +39 051 860558 · Fax +39 051 6647859 · Mail: info@novalux.it · VAT number 00536541204 · novalux.com  
Company subject to the management and coordination by SLV GmbH

This technical data sheet is owned by Novalux S.r.l., all rights reserved. Novalux S.r.l. reserves the right to make changes without prior notice.  
Last update: 29/5/2026, 17:06:05