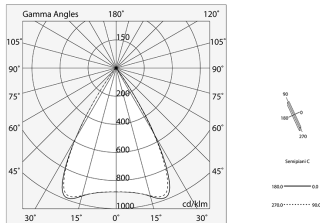
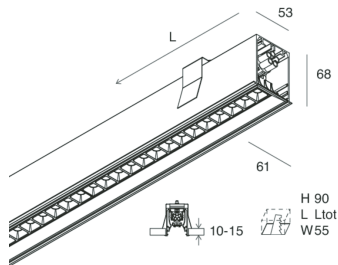
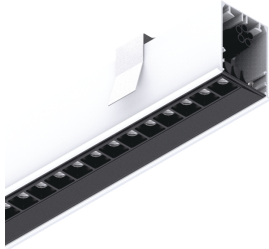


# HERO C

108820.01

**novalux**  
ITALIAN LIGHTING DESIGN SINCE 1948



## Features

Use: Indoor  
Type of installation: RECESSED INTO PLASTERBOARD  
Emission: DIRECT  
Optics: MICRO OPTICS  
Colour: WHITE  
Dimming: ON/OFF  
Emergency: NO  
L: 1428mm  
A: 61mm  
H: 68mm  
Made in: ITALY  
Warranty: 5 years  
Weight: 4.2kg

## Tech data

Luminaire input power: 40.5W  
Luminaire luminous flux: 3556lm  
IP: 40  
Insulation class: I  
No. of driver per product: 1  
Supply voltage: 220-240V 50/60Hz  
UGR: <19  
SELV: Si

## Source

Light source: LED  
Source power: 36W  
Colour temperature: 2700K  
CRI: >90  
Colour tolerance: 3 Step MacAdam  
LED lifespan: 50000h L80 B20

## Compliance

CEI EN 60598-1:2021 + A11:2023, CEI EN 60598-2-1:2022, CEI EN 60598-2-2:2012

## Standards

Photobiological risk: RISK GROUP 0 Certified fixture in EXEMPT GROUP, in accordance with CEI EN 62471:2010-01, IEC TR 62778:2014.  
CAM edilizia: The product complies with the requirements for public buildings, ministerial decree of 23rd June 2022 n.256.

## Average luminance

Average luminance limits for DSE workstation 65°(in accordance to EN 12464-1:2012).

[View more product info](#)



Novalux S.r.l. via Marzabotto, 2 40050 Funo di Argelato (BO) Italy  
Tel: +39 051 860558 · Fax +39 051 6647859 · Mail: info@novalux.it · VAT number 00536541204 · novalux.com  
Company subject to the management and coordination by SLV GmbH

This technical data sheet is owned by Novalux S.r.l., all rights reserved. Novalux S.r.l. reserves the right to make changes without prior notice.  
Last update: 8/4/2025, 11:59:47

# HERO C

108820.01

**novalux**  
ITALIAN LIGHTING DESIGN SINCE 1948

## COMPLETION ACCESSORIES

 <p>Technical drawing showing a perspective view of a rectangular lighting fixture with dimensions L, B, and H. A small inset shows a cross-section with dimensions H 20, L 138, and W 55.</p>	HERO C: MOD.CIECO 250 BIA	108852.01
 <p>Technical drawing showing a perspective view of an L-shaped lighting fixture with dimensions L, B, and H. A small inset shows a cross-section with dimensions H 20, L 138, and W 55.</p>	HERO C: MOD.CIECO ANG.DX 150 BIA	108854.01
 <p>Technical drawing showing a perspective view of a rectangular lighting fixture with dimensions L, B, and H. A small inset shows a cross-section with dimensions H 20, L 138, and W 55.</p>	HERO C: MOD.CIECO 1120 BIA	108855.01
 <p>Technical drawing showing a perspective view of a rectangular lighting fixture with dimensions L, B, and H. A small inset shows a cross-section with dimensions H 20, L 138, and W 55.</p>	HERO C: MOD.CIECO 1400 BIA	108856.01
 <p>Technical drawing showing a perspective view of a rectangular lighting fixture with dimensions L, B, and H. A small inset shows a cross-section with dimensions H 20, L 138, and W 55.</p>	HERO C: MOD.CIECO 1680 BIA	108857.01
 <p>Technical drawing showing a perspective view of a pair of rectangular lighting fixtures with dimensions L, B, and H. A small inset shows a cross-section with dimensions H 20, L 138, and W 55.</p>	HERO C: COPPIA TESTATE BIA	108860.01



Novalux S.r.l. via Marzabotto, 2 40050 Funo di Argelato (BO) Italy  
Tel: +39 051 860558 · Fax +39 051 6647859 · Mail: info@novalux.it · VAT number 00536541204 · novalux.com  
Company subject to the management and coordination by SLV GmbH

This technical data sheet is owned by Novalux S.r.l., all rights reserved. Novalux S.r.l. reserves the right to make changes without prior notice.  
Last update: 8/4/2025, 11:59:47