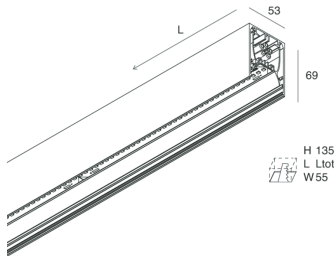
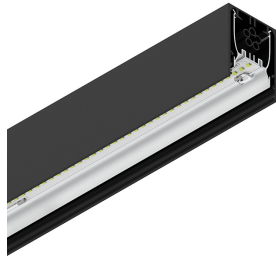


# HERO

108604.02 + 108926.99

HERO: 42W 2.7K 1960 NE + HERO: DIFF. OPALE TL PER 1960

**novalux**  
ITALIAN LIGHTING DESIGN SINCE 1948



## Features

Use: Indoor  
Type of installation: WALL, RECESSED INTO PLASTERBOARD, SUSPENDED, CEILING MOUNTED, TRACK  
Emission: DIRECT  
Optics: OPAL FULL LIGHT  
Colour: BLACK  
Dimming: ON/OFF  
Emergency: NO  
L: 1960mm  
A: 53mm  
H: 69mm  
Made in: ITALY  
Warranty: 5 years  
Weight: 5kg

## Tech data

Luminaire input power: 48.3W  
Luminaire luminous flux: 3730lm  
IP: 40  
Insulation class: I  
No. of driver per product: 2  
Supply voltage: 220-240V 50/60Hz  
SELV: Si

## Source

Light source: LED  
Source power: 42W  
Colour temperature: 2700K  
CRI: >90  
Colour tolerance: 3 Step MacAdam  
LED lifespan: 50000h L90 B10

## Compliance

CEI EN 60598-1:2021 + A11:2023, CEI EN 60598-2-1:2022, CEI EN 60598-2-2:2012

## Standards

Photobiological risk: RISK GROUP 0 Certified fixture in EXEMPT GROUP, in accordance with CEI EN 62471:2010-01, IEC TR 62778:2014.  
CAM edilizia: The product complies with the requirements for public buildings, ministerial decree of 23rd June 2022 n.256.

[HERO: View more product info](#)



Novalux S.r.l. via Marzabotto, 2 40050 Funo di Argelato (BO) Italy  
Tel: +39 051 860558 · Fax +39 051 6647859 · Mail: info@novalux.it · VAT number 00536541204 · novalux.com  
Company subject to the management and coordination by SLV GmbH

This technical data sheet is owned by Novalux S.r.l., all rights reserved. Novalux S.r.l. reserves the right to make changes without prior notice.  
Last update: 6/8/2025, 13:24:01

# HERO

108604.02 + 108926.99

HERO: 42W 2.7K 1960 NE + HERO: DIFF. OPALE TL PER 1960

**novalux**  
ITALIAN LIGHTING DESIGN SINCE 1948



## Features

Use: Indoor  
Optics: OPAL FULL LIGHT  
L: 1960mm  
A: 52.5mm  
H: 15mm  
Made in: ITALY  
Warranty: 5 years  
Weight: 0.13kg

## Tech data

IP: 40



Novalux S.r.l. via Marzabotto, 2 40050 Funo di Argelato (BO) Italy  
Tel: +39 051 860558 · Fax +39 051 6647859 · Mail: info@novalux.it · VAT number 00536541204 · novalux.com  
Company subject to the management and coordination by SLV GmbH

This technical data sheet is owned by Novalux S.r.l., all rights reserved. Novalux S.r.l. reserves the right to make changes without prior notice.  
Last update: 6/8/2025, 13:24:01

# HERO

108604.02 + 108926.99



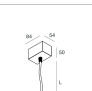
HERO: 42W 2.7K 1960 NE + HERO: DIFF. OPALE TL PER 1960

**novalux**  
ITALIAN LIGHTING DESIGN SINCE 1948

## COMPLETION ACCESSORIES

	HERO: MOD.CIECO 250 NE	108676.02
	HERO: MOD.CIECO ANG.DX 150 NE	108678.02
	HERO: COPPIA TESTATE NE	108684.02
	HERO: MOD.CIECO ANG.SX 150 NE	108677.02
	HERO: MOD.CIECO 1680 NE	108681.02
	HERO: MOD.CIECO 1120 NE	108679.02
	HERO: MOD.CIECO 1400 NE	108680.02

## MOUNTING ACCESSORIES

	HERO: STAFFA PARETE "L" NE	108687.02
	HERO: SOSPL3000 1PZ TESTA W.G.BASSO	108685.99
	KIT ALIMENTAZIONE L1200 3P BIA	108919.01



Novalux S.r.l. via Marzabotto, 2 40050 Funo di Argelato (BO) Italy  
Tel: +39 051 860558 · Fax +39 051 6647859 · Mail: info@novalux.it · VAT number 00536541204 · novalux.com  
Company subject to the management and coordination by SLV GmbH

This technical data sheet is owned by Novalux S.r.l., all rights reserved. Novalux S.r.l. reserves the right to make changes without prior notice.  
Last update: 6/8/2025, 13:24:01

# HERO

108604.02 + 108926.99

HERO: 42W 2.7K 1960 NE + HERO: DIFF. OPALE TL PER 1960

**novalux**  
ITALIAN LIGHTING DESIGN SINCE 1948



KIT ALIMENTAZIONE L3000 3P NE

**108920.02**



ALL-TRACK: COPPIA ADATT. 3P NER

**106722.02**



HERO: SPESS. CARTONG. 10MM 2PZ.

**108689.99**



HERO: SOSP.L3000 1PZ UNIONE W.G.BASSO

**108686.99**



KIT ALIMENTAZIONE L1200 3P NE

**108919.02**



HERO: SOSP.L3000 1PZ TESTA W.G.ALTO

**1086A1.99**



KIT ALIMENTAZIONE L3000 3P BIA

**108920.01**



HERO: KIT INCASSO LED (1X)

**108688.99**



HERO: SOSP.L3000 1PZ UNIONE W.G.ALTO

**1086A2.99**



Novalux S.r.l. via Marzabotto, 2 40050 Funo di Argelato (BO) Italy  
Tel: +39 051 860558 · Fax +39 051 6647859 · Mail: info@novalux.it · VAT number 00536541204 · novalux.com  
Company subject to the management and coordination by SLV GmbH

This technical data sheet is owned by Novalux S.r.l., all rights reserved. Novalux S.r.l. reserves the right to make changes without prior notice.  
Last update: 6/8/2025, 13:24:01