

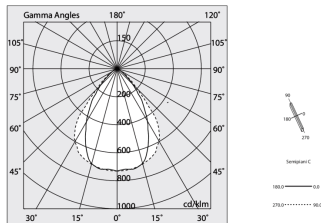
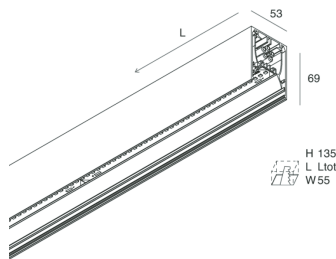
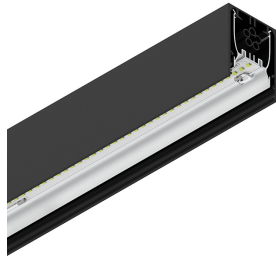
HERO

108604.02 + 108913.99

HERO: 42W 2.7K 1960 NE + HERO: DIFF.MICROPRISM. PER 1960



novalux
ITALIAN LIGHTING DESIGN SINCE 1948



Features

Use: Indoor
Type of installation: WALL, RECESSED INTO PLASTERBOARD, SUSPENDED, CEILING MOUNTED, TRACK
Emission: DIRECT
Optics: MICROPRISMATIZED
Colour: BLACK
Dimming: ON/OFF
Emergency: NO
L: 1960mm
A: 53mm
H: 69mm
Made in: ITALY
Warranty: 5 years
Weight: 5kg

Tech data

Luminaire input power: 48.3W
Luminaire luminous flux: 3650lm
IP: 40
Insulation class: I
No. of driver per product: 2
Supply voltage: 220-240V 50/60Hz
UGR: <19
SELV: Si

Source

Light source: LED
Source power: 42W
Colour temperature: 2700K
CRI: >90
Colour tolerance: 3 Step MacAdam
LED lifespan: 50000h L90 B10

Compliance

CEI EN 60598-1:2021 + A11:2023, CEI EN 60598-2-1:2022, CEI EN 60598-2-2:2012

Standards

Photobiological risk: RISK GROUP 0 Certified fixture in EXEMPT GROUP, in accordance with CEI EN 62471:2010-01, IEC TR 62778:2014.
CAM edilizia: The product complies with the requirements for public buildings, ministerial decree of 23rd June 2022 n.256.

Average luminance

Average luminance limits for DSE workstation 65°(in accordance to EN 12464-1:2012).

[HERO: View more product info](#)



Novalux S.r.l. via Marzabotto, 2 40050 Funo di Argelato (BO) Italy
Tel: +39 051 860558 · Fax +39 051 6647859 · Mail: info@novalux.it · VAT number 00536541204 · novalux.com
Company subject to the management and coordination by SLV GmbH

This technical data sheet is owned by Novalux S.r.l., all rights reserved. Novalux S.r.l. reserves the right to make changes without prior notice.
Last update: 6/8/2025, 13:24:16

HERO

108604.02 + 108913.99

HERO: 42W 2.7K 1960 NE + HERO: DIFF.MICROPRISM. PER 1960



novalux
ITALIAN LIGHTING DESIGN SINCE 1948



Features

Use: Indoor
Optics: MICROPRISMATIZED
L: 1960mm
A: 48mm
H: 6mm
Made in: ITALY
Warranty: 5 years
Weight: 0.4kg

Tech data

IP: 40
UGR: <19

Average luminance

Average luminance limits for DSE workstation 65°(in accordance to EN 12464-1:2012).



Novalux S.r.l. via Marzabotto, 2 40050 Funo di Argelato (BO) Italy
Tel: +39 051 860558 · Fax +39 051 6647859 · Mail: info@novalux.it · VAT number 00536541204 · novalux.com
Company subject to the management and coordination by SLV GmbH

This technical data sheet is owned by Novalux S.r.l., all rights reserved. Novalux S.r.l. reserves the right to make changes without prior notice.
Last update: 6/8/2025, 13:24:16

HERO

108604.02 + 108913.99



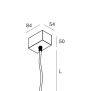
HERO: 42W 2.7K 1960 NE + HERO: DIFF.MICROPRISM. PER 1960

novalux
ITALIAN LIGHTING DESIGN SINCE 1948

COMPLETION ACCESSORIES

	HERO: MOD.CIECO 250 NE	108676.02
	HERO: MOD.CIECO ANG.DX 150 NE	108678.02
	HERO: COPPIA TESTATE NE	108684.02
	HERO: MOD.CIECO ANG.SX 150 NE	108677.02
	HERO: MOD.CIECO 1680 NE	108681.02
	HERO: MOD.CIECO 1120 NE	108679.02
	HERO: MOD.CIECO 1400 NE	108680.02

MOUNTING ACCESSORIES

	HERO: STAFFA PARETE "L" NE	108687.02
	HERO: SOSPL.3000 1PZ TESTA W.G.BASSO	108685.99
	KIT ALIMENTAZIONE L1200 3P BIA	108919.01



Novalux S.r.l. via Marzabotto, 2 40050 Funo di Argelato (BO) Italy
Tel: +39 051 860558 · Fax +39 051 6647859 · Mail: info@novalux.it · VAT number 00536541204 · novalux.com
Company subject to the management and coordination by SLV GmbH

This technical data sheet is owned by Novalux S.r.l., all rights reserved. Novalux S.r.l. reserves the right to make changes without prior notice.
Last update: 6/8/2025, 13:24:16

HERO

108604.02 + 108913.99

HERO: 42W 2.7K 1960 NE + HERO: DIFF.MICROPRISM. PER 1960

novalux
ITALIAN LIGHTING DESIGN SINCE 1948



KIT ALIMENTAZIONE L3000 3P NE

108920.02



ALL-TRACK: COPPIA ADATT. 3P NER

106722.02



HERO: SPESS. CARTONG. 10MM 2PZ.

108689.99



HERO: SOSP.L3000 1PZ UNIONE W.G.BASSO

108686.99



KIT ALIMENTAZIONE L1200 3P NE

108919.02



HERO: SOSP.L3000 1PZ TESTA W.G.ALTO

1086A1.99



KIT ALIMENTAZIONE L3000 3P BIA

108920.01



HERO: KIT INCASSO LED (1X)

108688.99



HERO: SOSP.L3000 1PZ UNIONE W.G.ALTO

1086A2.99



Novalux S.r.l. via Marzabotto, 2 40050 Funo di Argelato (BO) Italy
Tel: +39 051 860558 · Fax +39 051 6647859 · Mail: info@novalux.it · VAT number 00536541204 · novalux.com
Company subject to the management and coordination by SLV GmbH

This technical data sheet is owned by Novalux S.r.l., all rights reserved. Novalux S.r.l. reserves the right to make changes without prior notice.
Last update: 6/8/2025, 13:24:16