



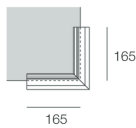
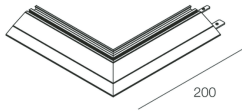
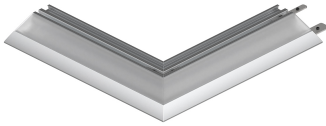
## Features

Use: Indoor  
Type of installation: RECESSED INTO PLASTERBOARD, LIGHT COVE  
Emission: INDIRECT  
Optics: OPAL  
L: 200mm  
A: 200mm  
H: 19.7mm  
Made in: ITALY  
Warranty: 5 years  
Weight: 1.3kg

## Tech data

IP: 40

[View more product info](#)



## COMPLETION ACCESSORIES

---



SIDE: KIT DI GIUNZIONE

**106902.99**

---



SIDE: KIT DI GIUNZIONE 90°

**106903.99**