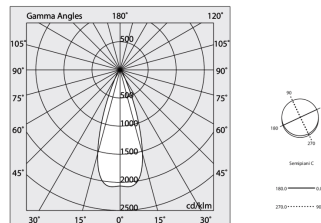
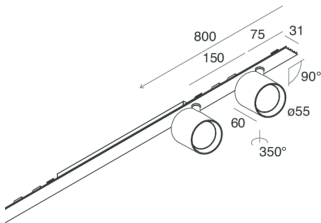
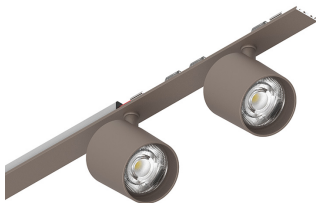


# P-30 STRIP LED

1058C3.21

**novalux**  
ITALIAN LIGHTING DESIGN SINCE 1948



## Features

Use: Indoor

Type of installation: RECESSED INTO PLASTERBOARD, SUSPENDED, CEILING MOUNTED

Emission: ADJUSTABLE

Optics: SPOT

Beam: 34°

Colour: CAPPUCCINO

Dimming: ON/OFF

Emergency: NO

L: 800mm

A: 31mm

Made in: ITALY

Warranty: 5 years

## Tech data

Luminaire input power: 19.6W

Luminaire luminous flux: 1728lm

IP: 20

Insulation class: I

No. of driver per product: 1

Supply voltage: 220-240V 50/60Hz

SELV: Si

## Source

Light source: LED

Source power: 18W

Source luminous flux: 1948lm

Colour temperature: 2700K

CRI: >90

Colour tolerance: 2 Step MacAdam

LED lifespan: 50000h L80 B20

## Compliance

CEI EN 60598-1:2021 + A11:2023, CEI EN 60598-2-1:2022, CEI EN 60598-2-2:2012

## Standards

Photobiological risk: RISK GROUP 1 Certified fixture in RISK GROUP 1 (Low Risk)-The fixture does not pose a hazard due to normal behavioral limitations on exposure - in accordance with CEI EN 62471:2010-01, IEC TR 62778:2014.

CAM edilizia: The product complies with the requirements for public buildings, ministerial decree of 23rd June 2022 n.256.

[P-30 STRIP LED: View more product info](#)



Novalux S.r.l. via Marzabotto, 2 40050 Funo di Argelato (BO) Italy  
Tel: +39 051 860558 · Fax +39 051 6647859 · Mail: [info@novalux.it](mailto:info@novalux.it) · VAT number 00536541204 · [novalux.com](http://novalux.com)  
Company subject to the management and coordination by SLV GmbH

This technical data sheet is owned by Novalux S.r.l., all rights reserved. Novalux S.r.l. reserves the right to make changes without prior notice.  
Last update: 6/8/2025, 12:54:07